

August 18, 1966
159 Bay Laurel Drive, Menlo Park.

Dear Mum,

Happy Birthday! Have no

money, so am sending some drawings, hope you can make them out. (M. yesterday landed a job in the Stamford bookstore, so she'll be working in the university, but $\frac{1}{2}$ last month's pay goes to the employment agency!). Anyway,

the drawings — have tried to give an idea of all the trees around — top storey, ours is biggest, the main room would be a little bit smaller than ~~that new room~~ ~~at~~ ~~Ermond & Bill's~~ ~~old room~~ ~~at~~ — it's about the best companion I can think of) — then there's a plan and some native art. facts

Have discovered just around the corner ^(literally) a shopping centre for the very rich called "Allied Arts" — it's an old Spanish hacienda and rambling outhouse, fruit trees, roses, artisan living in situ, surrounded by white-washed walls — we'll do some drawings soon. — love, Chris.

(It's so discreet you can walk past without noticing.)

1

Madeleine and Chris rent the apartment upstairs

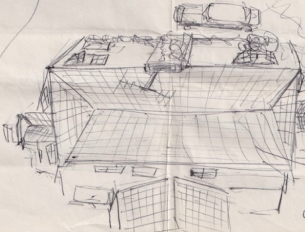
Rayland Drive

Kit

Escher Beach

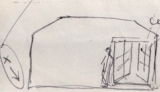
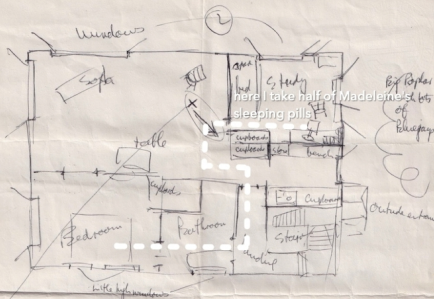
Apples

Squarely here in the two apartments
landed in middle, very porous all over
ground



roof - tile most
filled with squares
of thick grey bricks
abt 1 1/2" x 1 1/2"
change from honey
comb

Apple



Ceiling looks like this
make rooms look
like home
feels like Earth
30 miles away



Room is actually larger than this

At Stanford Hospital, it takes four
aides to hold me down while
they pump my stomach out.

Awake, Madeleine leans over me
"I'm sorry I didn't make a
proper job of it."

She shudders, winces.

Next I am in a brightly-lit recovery
room, with a group of doctors
watching behind dark glass. This
rekindles anger.

On discharge, I am assigned a
psychiatric intern for therapy.
He smokes a fifty-minute cigar.

Big Pops here I take half of Madeleine's lot of sleeping pills

Outside area

Floors are stained
yellow curtains, chrome
spacious, and the
high windows very
at feel very open.

The garden is rather
unkept -
The ground is
relaxed - just sand, even
woodpecker
you see are trees, any when
you look, yet not

WINDOWS